

ORIGINAL ARTICLE

Open Access



A pilot cost-analysis study comparing AI-based EyeArt[®] and ophthalmologist assessment of diabetic retinopathy in minority women in Oslo, Norway

Mia Karabeg^{1,2}, Goran Petrovski^{1,2,3,4}, Silvia NW Hertzberg^{1,2}, Maja Gran Erke², Dag Sigurd Fosmark², Greg Russell⁵, Morten C. Moe^{1,2}, Vallo Volke⁸, Vidas Raudonis⁹, Rasa Verkauskiene¹⁰, Jelizaveta Sokolovska⁷, Inga-Britt Kjelleevold Haugen⁶ and Beata Eva Petrovski^{1,2,10*}

Abstract

Background Diabetic retinopathy (DR) is the leading cause of adult blindness in the working age population worldwide, which can be prevented by early detection. Regular eye examinations are recommended and crucial for detecting sight-threatening DR. Use of artificial intelligence (AI) to lessen the burden on the healthcare system is needed.

Purpose To perform a pilot cost-analysis study for detecting DR in a cohort of minority women with DM in Oslo, Norway, that have the highest prevalence of diabetes mellitus (DM) in the country, using both manual (ophthalmologist) and autonomous (AI) grading. This is the first study in Norway, as far as we know, that uses AI in DR-grading of retinal images.

Methods On Minority Women's Day, November 1, 2017, in Oslo, Norway, 33 patients (66 eyes) over 18 years of age diagnosed with DM (T1D and T2D) were screened. The Eidon - True Color Confocal Scanner (CenterVue, United States) was used for retinal imaging and graded for DR after screening had been completed, by an ophthalmologist and automatically, using EyeArt Automated DR Detection System, version 2.1.0 (EyeArt, EyeNuk, CA, USA). The gradings were based on the International Clinical Diabetic Retinopathy (ICDR) severity scale [1] detecting the presence or absence of referable DR. Cost-minimization analyses were performed for both grading methods.

Results 33 women (64 eyes) were eligible for the analysis. A very good inter-rater agreement was found: 0.98 ($P < 0.01$), between the human and AI-based EyeArt grading system for detecting DR. The prevalence of DR was 18.6% (95% CI: 11.4–25.8%), and the sensitivity and specificity were 100% (95% CI: 100–100% and 95% CI: 100–100%), respectively. The cost difference for AI screening compared to human screening was \$143 lower per patient (cost-saving) in favour of AI.

*Correspondence:

Beata Eva Petrovski
b.e.petrovski@medisin.uio.no

Full list of author information is available at the end of the article



© The Author(s) 2024. **Open Access** This article is licensed under a Creative Commons Attribution 4.0 International License, which permits use, sharing, adaptation, distribution and reproduction in any medium or format, as long as you give appropriate credit to the original author(s) and the source, provide a link to the Creative Commons licence, and indicate if changes were made. The images or other third party material in this article are included in the article's Creative Commons licence, unless indicated otherwise in a credit line to the material. If material is not included in the article's Creative Commons licence and your intended use is not permitted by statutory regulation or exceeds the permitted use, you will need to obtain permission directly from the copyright holder. To view a copy of this licence, visit <http://creativecommons.org/licenses/by/4.0/>. The Creative Commons Public Domain Dedication waiver (<http://creativecommons.org/publicdomain/zero/1.0/>) applies to the data made available in this article, unless otherwise stated in a credit line to the data.

Conclusion Our results indicate that The EyeArt AI system is both a reliable, cost-saving, and useful tool for DR grading in clinical practice.

Keywords Screening, Diabetic retinopathy, Minority women, Norway, Manual grading, Automated grading, Artificial intelligence, Cost-analysis

Introduction

Diabetes mellitus (DM) is a major medical and societal challenge due to its rapid increase in global prevalence and devastating late complications. A dramatic rise in the number of new cases is expected due to an overweight epidemic and an ageing population during the next decades [2, 3]. In Norway, the estimated number of people with DM is between 316 000 to 345 000, of which, 60 000 are undiagnosed DM [4].

Diabetic retinopathy (DR) is one of the most common microvascular complications of DM [5]. It is the leading cause of secondary blindness and reduced vision in working-aged people (25 to 75 years) [5, 6]. In 2020, a study across 59 countries, found that 6.2% of people with diabetes had sight-threatening diabetic retinopathy (STR), and 4.1% had diabetic macula edema (DME), affecting totally 47.4 million individuals [5]. This number is expected to rise to 73.4 million by 2045 [7]. In Norway, the prevalence of STR was 38% in type 1 DM (T1D) and 1.5% in T2D during 2012 [8]. Regional and global programs which help lessen the burden brought on by DM are of high interest to patients, healthcare professionals and decision-makers. Such programs need systematic evaluation for their impact on health outcomes, cost-effectiveness, and health equity [9].

Systematic DR screening is proven to be cost-effective in reducing blindness and visual impairment for patients with DM by optimizing time of treatment that may halt disease progression [10]. In the Oslo region, a screening program for DR has recently been started [11]. Artificial intelligence (AI) has been proven to have both high specificity and sensitivity, as well as to be cost-effective [12–15].

It is well known that some immigrant groups are more susceptible of developing T2D than native Europeans in countries they immigrate to [16, 17]. Immigrants from Asia and Africa, especially those from Pakistan and Sri Lanka [18] are at higher risk for T2D in comparison to immigrants from other parts of Europe or North America, as well as developing it at a younger age [16, 19]. Especially, the minority women population is known to have the highest prevalence of DM in Norway [18]. Ethnic minorities in Norway comprise groups of people with ancient connections to Norway (people of Finish descent (Kvens), Forest Finns, Tatars, Jews) [20], and diverse immigrant groups, among others Bosnia and Herzegovina, Pakistan, Somalia and Türkiye [21]. According to the Central Statistics Bureau-Norway, there are 877 227

immigrants in Norway in 2023 (7.1% more than the year before). Together with Norwegian-born to immigrant parents, this group made up to 19.9% of the population of Norway [22]. Non-European immigrants mainly come to Norway from Asia (31%), Africa (13%) North & South America and Oceania (5%).

Here, we report the findings from a cross-sectional pilot study of an internal quality register in Oslo, Norway, which utilizes AI in the screening of retinal images for DR. The aim of this study was to perform a cost-analysis of the detection of DR in a cohort of minority women with DM in Oslo, Norway, using both manual/ophthalmologist- (gold standard) and AI-grading of DR. As Norway has not yet established an AI screening financing system, we used a new establishment in the USA as a comparator to human screening in Norway [23].

Patients and methods

Study setup

This pilot study was conducted in accordance with the Declaration of Helsinki and approved by the Data Protection Officer (DPO) at Oslo University Hospital (OUH), No. 20/11,953. All participants took part in the study on a voluntary basis and anonymously. In cases where STR was detected, the patients were referred for treatment at the Department of Ophthalmology, Oslo University Hospital, Oslo, Norway.

Consecutive patients with self-reported DM (T1D and T2D) were screened on the Minority Women Day on November 1, 2017, in Oslo, Norway. Thirty-three [33] patients (66 eyes) who expressed interest in having their photos taken, were examined and graded promptly over a period of 2 h.

The inclusion criteria of the study were: all participants who attended the screening day; 18 years of age and older; diagnosis of diabetes; willingness to undergo examination. The enrolment criteria did not require knowledge of the patient's ophthalmic history, including DR diagnosis. The exclusion criteria were: strabismus; opaque cornea; continuous vision loss in one or both eyes; inability to communicate and understand the instructions. Images were collected anonymously, so no personal data were collected. Fundus images, 2 per eye, were obtained by the same qualified nurse using non-mydratic fundus camera Eidon - True Color Confocal Scanner (CenterVue, United States) with a field size of a single photo of 60°. Images were graded for DR manually (by two experienced retina specialists) and autonomously

using AI-based software (EyeArt, Eyenuk, Inc, CA, USA). The EyeArt AI system has CE marking as a class IIb medical device in the European Union under the EU's Medical Devices Regulation 2017/745 ("MDR") for the detection of DR, AMD, and glaucomatous optic nerve damage. It has been validated for use with color fundus photographs that provide retinal coverage equivalent to the combined coverage of field 1 (optic nerve head-centered) and field 2 (macula-centered) color fundus photographs, with a 45-degree field of view. For this particular type of camera, the eye and field (either macula or optic nerve head (ONH) center) were automatically detected by the software. Both the software quality control model and the operator confirmed the image quality.

A short explanation of the results was provided to the patients.

Grading of diabetic retinopathy

During image evaluation, both the graders and EyeArt classified the signs and the stages of DR and maculopathy and graded the images in alignment based on the International Clinical Diabetic Retinopathy (ICDR) severity scale [24]. The scale consists of: No DR, Mild Non-proliferative DR (NPDR), Moderate NPDR, Severe NPDR, Proliferative DR (PDR) and DME. Since EyeArt system is programmed to detect referable DR (grade Moderate NPDR and above), grading by ophthalmologist was performed likewise into no DR (negative) and DR (positive), as well as the DR grades (mild, moderate, severe, proliferative) and presence or absence of diabetic maculopathy the presence of any exudates within one disc diameter from the center of the fovea.

Statistical analysis

The weighted Kappa and Cohen's kappa was used to test strength of agreement between the two gradings (ophthalmologist vs. AI-based grading of DR) in case of ordinal variables (grades) with 4 categories (0: no diabetic retinopathy, 1: mild; 2: moderate; 3: severe) and in case of two categories (0- No; 1- Yes). Gradings with perfect agreement would both assign the same category/grade to each fundus picture. The inter-grader agreement results were assessed using the Landis and Koch approach, where: 0.20=poor; 0.21–0.40=fair; 0.41–0.60=moderate; 0.61–0.80=good; and 0.81–1.00=very good agreement [25]. The weighted-Kappa statistic is generally close to Spearman correlation coefficients (the Spearman's correlation coefficient (ρ) could compare the ordinal variables with 4 categories/grades ranges from 0 to 4; a Spearman's correlation of 1 indicates a perfect, positive relationship).

Costs and sensitivity analysis

Consistent with the National Guidelines, an extended healthcare perspective was used to calculate the total patient cost for the procedure performed in a cost-minimization analysis. This included direct- and some indirect-healthcare costs (two-way transportation and time spent to travel and receive needed care by the patient).

To estimate the direct costs for patients under manual screening, we used a diagnosis-related group (DRG) weights for the fundus photography code, which includes screening (\$164). The AI screening costs were compared to those used in the USA as established in 2021 under the government health programs (\$33). The autonomous diabetic retinal examination was coded as 92,229, and exact reimbursement for AI was geography-dependent, as well as other factors [23, 26]. We therefore used various ranges of values to calculate the probable total cost per patient for using AI compared to the manual/ophthalmologist screening. Indirect healthcare costs were obtained from the Norwegian Medicine Agency (NOMA 2022) database. Transport costs per journey (\$73) and patient time cost per hour (\$24) were averagely reported for use, including evaluation studies.

The total cost per patient was calculated by adding the estimated DRG cost values (manual/ophthalmologist screening or AI) to the transport costs and patients' time costs. In both screening strategies, one visit was assumed, therefore a round trip cost was applied to both by multiplying the cost by 2. We also assumed the time for travel and for receiving the needed care for manual/ophthalmologist- and AI- screening being 1.5 h and 1 h, respectively. The patient time cost was multiplied with the appropriate time for each strategy. In both strategies, we assumed that the cost of the doctor or nurse doing the grading of being the same, so we excluded these costs from the calculations. AI costs were converted to U.S. dollars as per November 30, 2022, exchange rate (i.e. 9.89 Norwegian Kroner (NOK) equalling to 1 U.S. dollar).

We further estimated the total costs per patient on various ranges of values for different parameters to determine the robustness of our analysis. First, we estimated the costs viable for AI screening in a one-way deterministic analysis to establish inclusion of other factors or geographic considerations. For instance, AI cost varied from \$33 to \$64 while fundus photography performed within an eye clinic was reimbursed at \$113, so we evaluated all these costs under the sensitivity analysis, and also checked the potential of AI reimbursement with same DRG weight used for ophthalmologist. In a two-way sensitivity analysis, we considered a range of patient time for the manual screening and AI costs. Furthermore, we estimated, in a two-way sensitivity analysis, a range of values for AI patient time and AI screening costs.

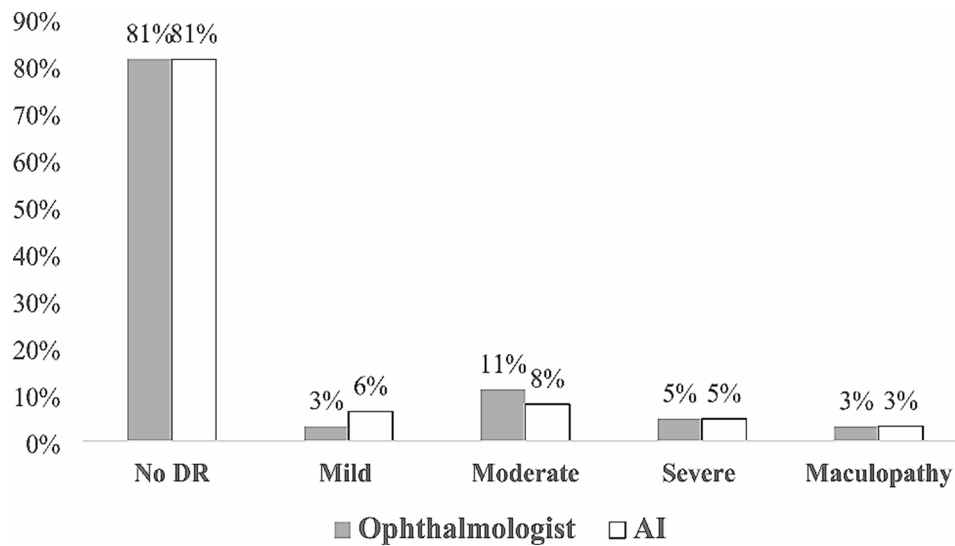


Fig. 1 Grading of diabetic retinopathy and maculopathy in the studied population using manual/ophthalmologist- and AI-based EyeArt methods

Table 1 Inter-rater reliability, sensitivity/specificity and accuracy of the AI-based EyeArt grading system for diabetic retinopathy compared to manual/ophthalmologist grading

	Diabetic Retinopathy N= 66 eyes	Maculopathy N= 66 eyes
Ophthalmologist vs. AI (Weighted Kappa and Spearman's rho)	0.95; 1.00 ($P < 0.001$)	1.00; 1.00 ($P < 0.001$)
Prevalence of Diabetic Retinopathy	18.8% (95% CI: 9.1–28.3%)	3.1% (95% CI: 0.4–10.8%)
Sensitivity	100% (95% CI: 73.5–100%)	100% (95% CI: 15.8–100%)
Specificity	100% (95% CI: 93.1–100%)	100% (95% CI: 94.2–100%)
Accuracy	100% (94.4–100%)	100% (94.4–100%)

K: weighted Cohens Kappa; CI: confidence interval; P: level of significance

Results

The results of the grading for DR in the studied population by a manual/ophthalmologist- and the AI-based/EyeArt software- grading is shown in Fig. 1. Two of the 33 subjects included in the pilot study had ungradable images due to poor quality in one eye, which was accurately detected by both, manual grader and EyeArt. The distribution of the DR grades for the manual/ophthalmologist and AI-based/EyeArt was the following: 81% and 81% (No DR), 3% and 6% (Mild DR), 11% and 8% (Moderate DR), 5% and 5% (Severe DR); the presence of diabetic maculopathy was: 3% and 3%, respectively. Overall, the values did not differ significantly.

According to the results of the Weighted-kappa and, a very good inter-rater agreement was found: 0.95–0.9984 ($P < 0.001$), between the human and AI-based EyeArt grading system. The prevalence of DR and maculopathy were 18.8% (95% CI: 9.1–28.3%) and 3.1% (95% CI:

0.4–10.8%), respectively; the sensitivity was 100% (95% CI: 73.5–100% and 95% CI: 15.8–100%), respectively; the specificity was 100% (95% CI: 93.1–100% and 95% CI: 94.2–100%), respectively; the accuracy was 100% (94.4–100%) and 100% (94.4–100%), respectively (Table 1).

The manual screening costs per patient were higher (\$164) than AI screening (\$33), hence human/manual screening total patient costs were similarly higher (\$273) than those for AI screening (\$131) at baseline. Consequently, the cost difference per patient for AI screening compared to manual screening was \$143 lower (e.g. cost-saving). Considering, the estimated costs of DM patients in this study, in an extended healthcare perspective, the screening total costs for any given period would be \$9009 for human screening and \$4323 for AI screening. If half of the DM patients are screened by either of the strategies, the total costs will aggregate to a sum of \$6666 per given screening session.

Cost sensitivity analysis

The impact of the various costs on the total cost difference from an extended healthcare perspective showed that the cost saving diminished at almost equal values as manual screening costs at baseline or higher values (Fig. 2).

The findings remained unchanged when different times used by patients for manual screening was compared to AI costs. Thirty minutes to one hour used per patient appeared to remain cost-saving at all estimated values until the AI screening costs equaled the manual screening costs (Fig. 3). The patient time cost was multiplied with the appropriate time for each screening strategy.

Assessing the AI screening costs and time taken by patients at the intervention found that the cost saving benefit remained despite the costs and patient time up

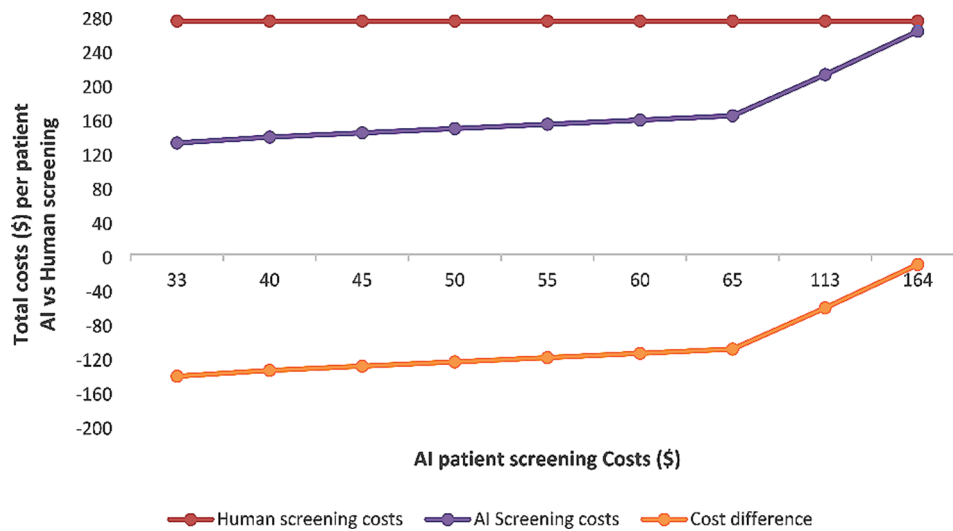


Fig. 2 One-way sensitivity analysis of varying AI patient screening costs for the total costs and total cost difference for AI compared to human screening

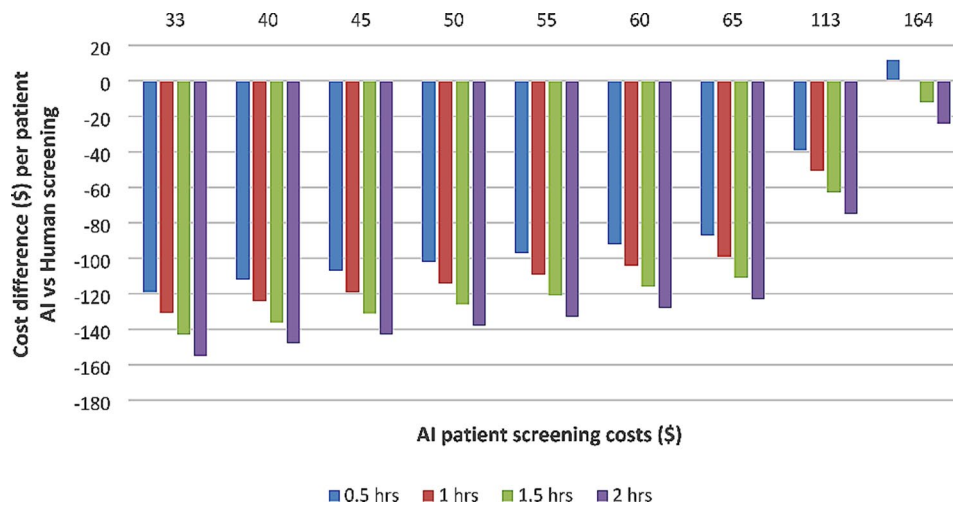


Fig. 3 Two-way sensitivity analysis for cost difference comparing varying patient time taken from half an hour to maximum of two hours which includes travel time and time spent at the screening facility for human screening vs. AI costs

until 2 h used for AI-based screening, and the costs were similar to manual screening (Fig. 4).

Discussion

DR is a devastating complication of DM, which affects the working-age population, as well as the elderly, decreasing their ability to work and quality of life [27, 28]. Nevertheless, in many parts of Norway, there is no clear communication between the healthcare professionals involved in the care of patients with DM. Furthermore, the interval between eye examinations is at the ophthalmologist’s discretion. The DIABØye study investigated and interviewed about 300 Norwegian DM patients recruited from GPs, and it was estimated that only 62% had an eye examination according to the guidelines, while 26% of patients have never had an eye examination [8, 29]. In primary health care, there is a clear lack of information

whether an eye examination has been performed and the result thereof [29]. Moreover, only 50.8% of T1D and 32.5% of T2D patients in the Norwegian diabetes registry (NOKLUS) report of regular eye examinations [30, 31]. Norway is about to establish regional screening programs, based on recommendations from the Norwegian Directorate of Health.

In the Oslo region, our cohort found similar presence and distribution of the DR grades in the minority women compared to the general population of this region as recently screened in another study [32]. The population of Oslo having a high percentage of people of non-European background seems to be more vulnerable to develop DR and, therefore, needs a tighter control of their DM and DR. It is known that ethnic minority groups have a higher prevalence of DM than the rest of the population in Norway [16, 18, 19]. Clinical experience shows

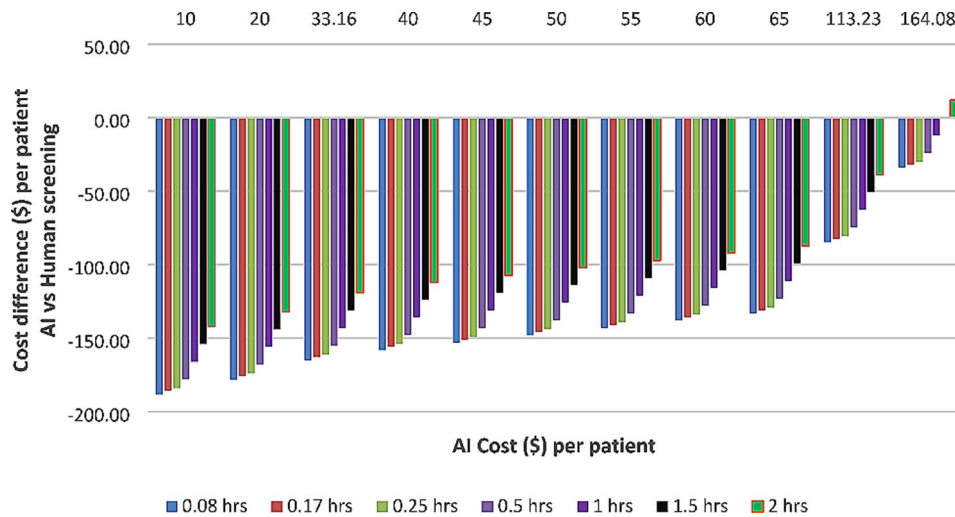


Fig. 4 Two-way sensitivity analysis for cost difference per patient comparing varying patient time taken from five minutes to maximum of two hours which includes travel time and time spent at the screening facility for AI screening vs. AI costs

that DM patients with ethnic minority background, in particular, have higher risk for not undertaking regular eye examinations and progression to severe DR. Furthermore, the estimated number of undiagnosed DM is of high public health importance, as years of delayed diagnosis equal years of DR and other complications to develop.

Regular screening is, therefore, crucial to prevent vision loss from DR (especially in higher risk groups) [33]. However, traditional screening methods, with dilated eye examination by ophthalmologist, using either ophthalmoscopy or stereoscopic 7 field images, face challenges, in addition to limited access to skilled personnel and time-consuming exams. Leveraging AI in ophthalmology presents a promising solution to the growing need for accurate and efficient screening.

In a large study, conducted through the English Diabetic Eye Screening Programme, the AI system (RetCAD v.2.1.0, Netherlands) was tested on 9817 patients. The AI was found to have 69.7% sensitivity and 92.2% specificity for detecting any diabetic retinopathy. It performed even better in mild cases, with 95.4% sensitivity and 92.0% specificity [15]. In a recent review paper, Rajesh et al. [34] analysed prospectively fully automated and autonomous algorithms using non-dilated 45° fundus images. All 6 of them had sensitivity and specificity > 85% (IDx-DR (renamed LumineticsCore), EyeArt, AYE-DS (FDA approved), SELENA, Google, VoxelCloud Retina and AIDRScreening system). Yet, compared to humans, they were found to be more sensitive to poor image quality and more often gave ungradable results. Since they were tested on different sets of images using different grading scales, and performed on a population with different retinal pigmentations [35] they were difficult to compare to each other [34]. Tufail et al. compared 3 of the

AI-based grading systems in the same population in England: 20,258 patients were examined, and 102,856 images analysed as part of the U.K. National Health Service Diabetic Eye Screening Programme to clarify whether three ARIAS systems (automated retinal image analysis systems) iGradingM, Retmarker and EyeArt could help to replace human graders. Both Retmarker and EyeArt appeared to have high enough sensitivity for referable DR (EyeArt 93.8% (92.9-94.6%), Retmarker 85.0% (83.6-86.2%)) and also to be cost-effective choice comparing to human graders (gold standard) [14, 36]. Similar to our findings, the English Diabetic Eye Screening Programme conducted on 30,000 patients, found the sensitivity of referable DR to be 95.7% (CI 94.8 to 96.5) and the specificity of referable DR 54.0% (CI 53.4 to 54.5) compared to human graders. The study concluded that AI is a safe way to screen for high-risk retinopathy in real-world screening [37]. On the other hand, in a large study conducted on 5 anonymized algorithms, Lee et al. [38] showed varying performance among these, with most not surpassing human graders. Interestingly, different models performed differently in cohorts with various demographics and dilation procedures. This study emphasizes the need for further research to guide clinicians in choosing effective AI algorithms for their practice [38].

Existing literature on whether AI screening is cost-effective is inconsistent, and factors like location and how it is implemented seem to have a significant impact [34]. In countries with high income (HIC), cost of human graders is higher, so it is easier for AI algorithm to price lower [38, 39]. Studies from Thailand and China, considered to be low- and middle-income countries (LMIC), found AI to be more cost-effective [40, 41]. However, other studies from China [42] and Brazil [43] have claimed the opposite, arguing that factors like “years without blindness”

and better compliance with patient referrals could contribute to AI being more cost-effective than humans [42]. The latest study from Singapore suggested that a combination AI/ human, where AI analysed images first and humans graded the positive cases, appeared to be most cost-effective [44].

Assessing the cost-effectiveness of using AI for DR screening compared to manual screening by ophthalmologists deserves critical discussion in Norway and wider. Systematic evaluation of screening programs aimed at mitigating the impact of diabetes should be assessed for their impact on health outcomes, cost-effectiveness, and health equity. This is crucial for evidence-based healthcare decision-making [14, 34].

The role of AI in DR screening in case of proven specificity, and sensitivity holds great potential in healthcare as a valuable addition, given the growing interest in AI applications in medicine. In our pilot study, a high inter-rater agreement between manual/ophthalmologist and AI-based EyeArt grading of DR could be achieved, which is in line with previous studies on similar or larger cohorts [45].

The cost-minimization evaluation comparing the costs of manual grading by ophthalmologists and AI-driven grading gives healthcare policymakers the basis for the potential cost-saving benefits of AI screening in Norway or other countries where DRG reimbursement codes for AI-based screening does not exist.

Many immigrants of non-European origin have a higher susceptibility to develop T2D. This applies to Norway as well, with its prominent immigration from the Indian subcontinent, Asia and Africa. This highlights the importance of tailored healthcare strategies for different population groups and optimized DR screening programs.

A primary limitation of our study is the small sample size, posing an increased risk of insufficient study power to detect a true, clinically relevant effect (Type II error) or falsely detecting a non-existent effect (Type I error). Additionally, the limited generalizability of findings to the broader Norwegian population is noteworthy, as the study population of minority women may not be representative of the overall demographic, potentially introducing selection bias. Moreover, the non-random selection of the study participants restricts our ability to analyze causal relationships, despite this not being the primary focus of the study. The use of a small sample compromises internal and external validity, with external factors, such as participant characteristics and environmental influences, potentially impacting study results but not comprehensively controlled. Other limitation of our study include the use of only one type of non-mydiatic fundus camera, which may limit the generalizability of the results. The use of single-field color fundus

photographs might also lead to a certain rate of missed diagnoses. In light of these limitations, it is crucial to interpret the results cautiously.

Further research is needed to investigate if different camera models would yield different outcomes. Additionally, larger sample sizes and diverse ethnic populations should be included to enhance the study's findings and overcome selection bias.

Conclusion

Our study provides evidence that AI could effectively screen/detect referable DR in real-world setting in a highly sensitive and specific manner. Such system can have higher accuracy when deployed at the primary-level than in tertiary-level healthcare settings.

The study also highlights the potential of AI in addressing these challenges, backed by empirical data and economic analysis. Further well-designed, multi-center studies with larger sample size with diverse ethnic backgrounds populations should be included to enhance the study's findings and overcome selection bias and to make informed decisions on healthcare strategies in DR screening.

Author contributions

Conceptualization, G.P., M.G.E., D.S.F., G.R., M.C.M., B.E.P.; methodology, M.K., G.P., S.N.W.H., G.R., B.E.P.; software, M.K., G.P., G.R., B.E.P.; validation, all authors; formal analysis, M.K., G.P., S.N.W.H., G.R., B.E.P.; investigation, all authors; resources and funding acquisition, G.P., V.V., V.R., R.V., J.S., I-B.K.H.; writing—original draft preparation, all authors; writing—review and editing, all authors; visualization, M.K., G.P., S.N.W.H., B.E.P.; supervision, G.P., M.C.M., I-B.K.H., B.E.P. All authors have read and agreed to the published version of the manuscript.

Funding

This research was funded by the Baltic Research Programme's project Nr.EEA-RESEARCH-60 "Integrated model for personalized diabetic retinopathy screening and monitoring using risk-stratification and automated AI-based fundus image analysis (PerDiRe)" financially supported by the European Economic Area (EEA) Grants, and the Norwegian Association for the Blind and Partially Sighted.

Open access funding provided by University of Oslo (incl Oslo University Hospital)

Data availability

The datasets during and/or analyzed during the current study are available from the corresponding author on reasonable request.

Declarations

Ethics approval and consent to participate statement

Provided in the Patients and Methods section.

Competing interests

Greg Russell works for EyeNuK, and he has no influence on the selection and analysis carried out on the patients. The other authors declare that they have no competing interests.

Author details

¹Center for Eye Research and Innovative Diagnostics, Department of Ophthalmology, Institute for Clinical Medicine, University of Oslo, Kirkeveien 166, 0450 Oslo, Norway

²Department of Ophthalmology, Oslo University Hospital, Kirkeveien 166, 0450 Oslo, Norway

³Department of Ophthalmology, University of Split School of Medicine and University Hospital Centre, 21000 Split, Croatia

⁴UKLONetwork, University St. Kliment Ohridski-Bitola, 7000 Bitola, Macedonia

⁵Clinical Development, Eyenuk Inc, Woodland Hills, CA, USA

⁶Norwegian Association of the Blind and Partially Sighted, Oslo, Norway

⁷Faculty of Medicine, University of Latvia, Jelgavas street 3, LV1004 Riga, Latvia

⁸Faculty of Medicine, Tartu University, 50411 Tartu, Estonia

⁹Automation Department, Kaunas University of Technology, 51368 Kaunas, Lithuania

¹⁰Institute of Endocrinology, Lithuanian University of Health Sciences, 50161 Kaunas, Lithuania

Received: 14 January 2024 / Accepted: 17 March 2024

Published online: 23 May 2024

References

- Cleland C. Comparing the International Clinical Diabetic Retinopathy (ICDR) severity scale. *Community eye Health*. 2023;36(119):10.
- Danaei G, Finucane MM, Lu Y, Singh GM, Cowan MJ, Paciorek CJ, et al. National, regional, and global trends in fasting plasma glucose and diabetes prevalence since 1980: systematic analysis of health examination surveys and epidemiological studies with 370 country-years and 2.7 million participants. *Lancet (British Edition)*. 2011;378(9785):31–40.
- Saaddine JB, Honeycutt AA, Narayan KMV, Zhang X, Klein R, Boyle JP. Projection of Diabetic Retinopathy and other Major Eye diseases among people with diabetes Mellitus: United States, 2005–2050. *Arch Ophthalmol*. 2008;126(12):1740–7.
- Stene LC, Ruiz PLD, Ásvold et al. How many people have diabetes in Norway in 2020? *Tidsskr Nor Laegeforen*. 2020.
- Avogaro A, Fadini GP. Microvascular complications in diabetes: a growing concern for cardiologists. *Int J Cardiol*. 2019;291:29–35.
- Bourne RRA, Jonas JB, Bron AM, Cicinelli MV, Das A, Flaxman SR, et al. Prevalence and causes of vision loss in high-income countries and in Eastern and Central Europe in 2015: magnitude, temporal trends and projections. *Br J Ophthalmol*. 2018;102(5):575–85.
- Teo ZL, Tham Y-C, Yu M, Chee ML, Rim TH, Cheung N, et al. Global prevalence of Diabetic Retinopathy and Projection of Burden through 2045 systematic review and Meta-analysis. *Ophthalmology*. 2021;128(11):1580–91.
- Kilstad HN, Sjolie AK, Goransson L, Hapnes R, Henschien HJ, Alsirk KE, et al. Prevalence of diabetic retinopathy in Norway: report from a screening study. *Acta Ophthalmol*. 2012;90(7):609–12.
- Aspelund T, Thornorisdottir O, Olafsdottir E, Gudmundsdottir A, Einarsdottir AB, Mehlsen J, et al. Individual risk assessment and information technology to optimise screening frequency for diabetic retinopathy. *Diabetologia*. 2011;54(10):2525–32.
- Javitt JC, Aiello LP. Cost-effectiveness of detecting and treating diabetic retinopathy. *Ann Intern Med*. 1996;124(1):164–9. <https://www.oslo-universitetssykehus.no>; Oslo University Hospital; [Available from: <https://www.oslo-universitetssykehus.no/behandlinger/diabetisk-retinopati-screening/>].
- Heydon P, Egan C, Bolter L, Chambers R, Anderson J, Aldington S, et al. Prospective evaluation of an artificial intelligence-enabled algorithm for automated diabetic retinopathy screening of 30 000 patients. *Br J Ophthalmol*. 2021;105(5):723–8.
- Bellefleur V, Lim G, Rim TH, Tan GSW, Cheung CY, Sadda S, et al. Artificial Intelligence Screening for Diabetic Retinopathy: the real-world emerging application. *Curr Diab Rep*. 2019;19(9):72–12.
- Tufail A, Kapetanakis VV, Salas-Vega S, Egan C, Rudisill C, Owen CG, et al. An observational study to assess if automated diabetic retinopathy image assessment software can replace one or more steps of manual imaging grading and to determine their cost-effectiveness. *Health Technol Assess*. 2016;20(92):1–72.
- Meredith S, Grinsven M, Engelberts J, Clarke D, Prior V, Vodrey J, et al. Performance of an artificial intelligence automated system for diabetic eye screening in a large English population. *Diabet Med*. 2023;40(6):e15055. -n/a.
- Tran AT, Berg TJ, Gjelsvik B, Mdala I, Thue G, Cooper JG, et al. Ethnic and gender differences in the management of type 2 diabetes: a cross-sectional study from Norwegian general practice. *BMC Health Serv Res*. 2019;19(1):904.
- Tran AT, Straand J, Diep LM, Meyer HE, Birkeland KI, Jenum AK. Cardiovascular disease by diabetes status in five ethnic minority groups compared to ethnic norwegians. *BMC Public Health*. 2011;11(1):554.
- Jenum AK, Diep LM, Holmboe-Ottesen G, Holme IMK, Kumar BN, Birkeland KI. Diabetes susceptibility in ethnic minority groups from Turkey, Vietnam, Sri Lanka and Pakistan compared with norwegians - the association with adiposity is strongest for ethnic minority women. *BMC Public Health*. 2012;12(1):150.
- Tran AT, Diep LM, Cooper JG, Claudi T, Straand J, Birkeland K, et al. Quality of care for patients with type 2 diabetes in general practice according to patients' ethnic background: a cross-sectional study from Oslo, Norway. *BMC Health Serv Res*. 2010;10(1):145.
- Government N. National minorities.
- Group MR. Norway [Available from: <https://minorityrights.org/country/norway/>].
- Immigrants. and Norwegian-born to immigrant parents. *www.ssb.no. Statistics Norway (SSB)*; 2023.
- AMA releases. 2021 CPT code set [press release]. 2021.
- Ophthalmology, ICo. Updated 2017 ICO guidelines for Diabetic Eye Care San Francisco 2017 [
- Altman D. Benchmarking Inter-Rater Reliability Coefficients. 1991.
- Abramoff MD, Roehrenbeck C, Trujillo S, Goldstein J, Graves AS, Repka MX, et al. A reimbursement framework for artificial intelligence in healthcare. *NPJ Digit Med*. 2022;5(1):72.
- Langelaan M, de Boer MR, van Nispen RM, Wouters B, Moll AC, van Rens GH. Impact of visual impairment on quality of life: a comparison with quality of life in the general population and with other chronic conditions. *Ophthalmic Epidemiol*. 2007;14(3):119–26.
- Jones S, Edwards RT. Diabetic retinopathy screening: a systematic review of the economic evidence. *Diabet Medicine: J Br Diabet Association*. 2010;27(3):249–56.
- Claudi T, Ingskog W, Cooper JG, Jenum AK, Hausken MF. Quality of diabetes care in Norwegian general practice. *Tidsskr nor Laegeforen*. 2008;128(22):2570–4.
- Norsk Diabetesregister for voksne [Available from: <https://www.kvalitetsregister.no/register/364/resultater/466>].
- Norsk diabetesregister for voksne. Årsrapport for 2014 med plan for forbedringstiltak [Available from: <http://www.noklus.no/Portals/2/Diabetesregister/Arssrapport%20Norsk%20diabetesregister%20for%20voksne%202014.pdf>].
- Sauesund ES, Jørstad ØK, Brunborg C, Moe MC, Erke MG, Fosmark DS et al. A Pilot Study of Implementing Diabetic Retinopathy Screening in the Oslo Region, Norway: Baseline Results. *Biomedicine*. 2023;11(4):1222.
- Julie M, Lauren ABH, Lyndell LL, Salmaan A-Q. Diabetic retinopathy in pregnancy: a review: Diabetic retinopathy in pregnancy. *Clin Exp Ophthalmol*. 2016;44:321–34.
- Rajesh AE, Davidson OQ, Lee CS, Lee AY. Artificial Intelligence and Diabetic Retinopathy: AI Framework, prospective studies, head-to-head validation, and cost-effectiveness. *Diabetes Care*. 2023;46(10):1728–39.
- Ethnicity is not. Biology: retinal pigment score to evaluate biological variability from ophthalmic imaging using machine learning. *J Eng*. 2023;411.
- Tufail A, Rudisill C, Egan C, Kapetanakis VV, Salas-Vega S, Owen CG, et al. Automated Diabetic Retinopathy Image Assessment Software: diagnostic accuracy and cost-effectiveness compared with human graders. *Ophthalmology*. 2017;124(3):343–51.
- Heydon P, Egan C, Bolter L, Chambers R, Anderson J, Aldington S, et al. Prospective evaluation of an artificial intelligence-enabled algorithm for automated diabetic retinopathy screening of 30 000 patients. *Br J Ophthalmol*. 2021;105(5):723–8.
- Lee AY, Lee CS, Hunt MS, Yanagihara RT, Blazes M, Boyko EJ, Multicenter. Head-to-Head, Real-World Validation Study of Seven Automated Artificial Intelligence Diabetic Retinopathy Screening Systems. *Diabetes Care* 2021;44:XXXX-XXXX. *Diabetes Care*. 2021;44(5):e108-e9.
- Fuller SD, Hu J, Liu JC, Gibson E, Gregory M, Kuo J, et al. Five-year cost-effectiveness modeling of primary Care-Based, Nonmydriatic Automated Retinal Image Analysis Screening among low-income patients with diabetes. *J Diabetes Sci Technol*. 2022;16(2):415–27.
- Srisubata A, Kittongsiri K, Sangroongruangsri S, Khemvaranan C, Shreibati JB, Ching J, et al. Cost-utility analysis of deep learning and trained human graders for Diabetic Retinopathy Screening in a Nationwide Program. *Ophthalmol Ther*. 2023;12(2):1339–57.
- Liu H, Li R, Zhang Y, Zhang K, Yusufu M, Liu Y, et al. Economic evaluation of combined population-based screening for multiple blindness-causing

- eye diseases in China: a cost-effectiveness analysis. *Lancet Glob Health*. 2023;11(3):e456–65.
42. Lin S, Ma Y, Xu Y, Lu L, He J, Zhu J, et al. Artificial Intelligence in Community-Based Diabetic Retinopathy Telemedicine Screening in Urban China: cost-effectiveness and cost-utility analyses with Real-World Data. *JMIR Public Health Surveill*. 2023;9:e41624–e.
 43. Rossi JG, Rojas-Perilla N, Krois J, Schwendicke F. Cost-effectiveness of Artificial Intelligence as a decision-support system Applied to the Detection and Grading of Melanoma, Dental Caries, and Diabetic Retinopathy. *JAMA Netw Open*. 2022;5(3):e220269–e.
 44. Xie Y, Nguyen QD, Hamzah H, Lim G, Bellemo V, Gunasekeran DV, et al. Artificial intelligence for teleophthalmology-based diabetic retinopathy screening in a national programme: an economic analysis modelling study. *Lancet Digit Health*. 2020;2(5):E240–9.
 45. Ipp E, Liljenquist D, Bode B, Shah VN, Silverstein S, Regillo CD, et al. Pivotal evaluation of an Artificial Intelligence System for Autonomous Detection of Referrable and Vision-threatening Diabetic Retinopathy. *JAMA Netw Open*. 2021;4(11):e2134254–e.

Publisher's Note

Springer Nature remains neutral with regard to jurisdictional claims in published maps and institutional affiliations.